

## A Keith Howard Cal Hiking Club Photo album

**Introduction.** These 40-plus photos and two newspaper articles were collected by Keith Howard over the years he was active in the University of California Hiking Club (1957 through 1961). Also included are later photos of friends engaged in similar activities. These photos were selected from a much larger collection of Keith's because they illustrated the kinds of activities favored by Keith, and showed identifiable people. Those not selected for inclusion here were mostly of scenery.

The original formats were Kodachrome slides, black-and-white prints, and faded newspaper articles. The images were scanned and edited later with the program *Photoshop Elements*. This editing mostly included cropping, brightening, cleaning of spots, increasing contrast, sharpening, and color shifting ... sometimes the latter in futile attempts to regain something like what the original color balances might have been.

Besides Keith, the photographers included Greg Smith, Lois Larusson, and Lou Goodman. Keith provided almost all information for the photo captions.

John Fiske, 2014  
Burlingame, CA

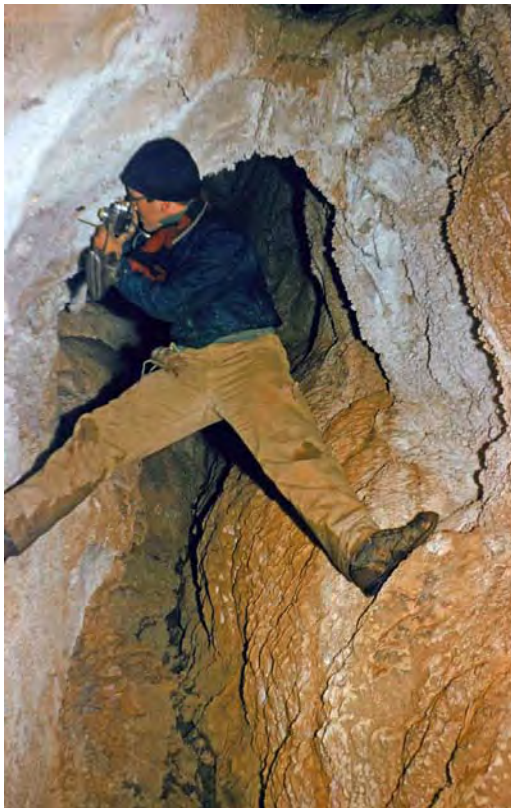
### **Caving.**



Jean Elliott in an ice cave, Bumpass Hell, Lassen Volcanic National Park,  
Spring Break, 1960



Keith Howard and Dave Rottman eating lunch in Church Cave at the bottom of the 113-ft. ladder drop. Trip circa 1959. Caption above the original black-and-white print from Lou Goodman said *Subterranean Soups On!*



Lou Goodman photographing, 1959 or 1960, in a cave known to UCHC cavers as *Dragon Belly* or *Draggin Belly*.

Lou Goodman emerging from the *Dragon Belly/Draggin Belly Cave*, 1959 or 1960.



Dragon Belly/Draggin Belly Cave, 1959 or 1960.



## Snow Camping, Skiing, Snowshoeing, and Mountaineering

Wally Reed on Pyramid Peak (Desolation Valley Wilderness), early 1960. From a *Snowcamping is Fun!!!* weekend trip. That motto became kind of badge of honor to UCHCers who survived such ordeals with humor intact.

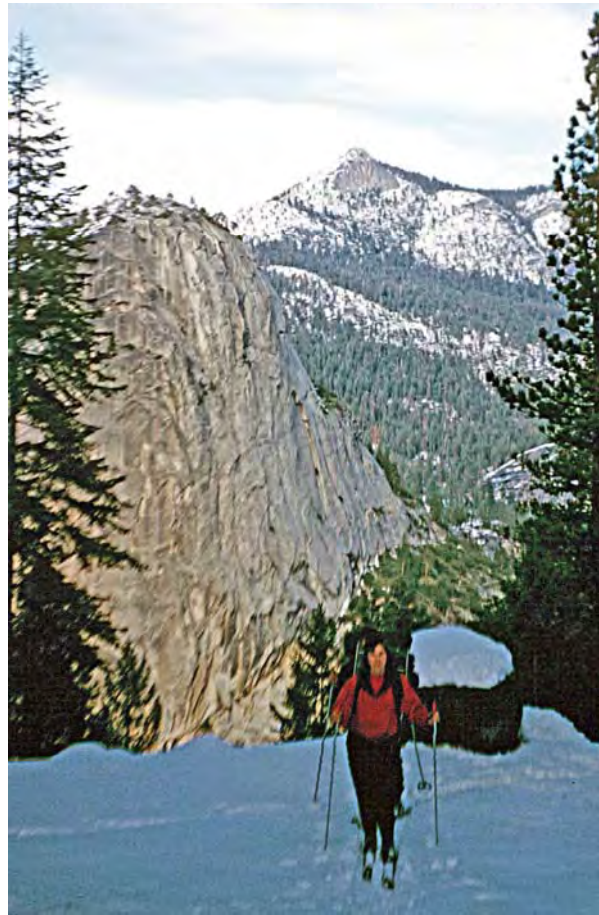


The following six photos came from the 1961 attempt to climb Mt. Clark (Yosemite National Park) in the winter. Various groups from the UCHC and friends tried several times for a winter ascent, always failing to gain the summit. Such trips became known as the *Annual Mt. Clark Disaster*.



Unidentified, (left, maybe Barbara Tihen), Marcia Lightbody (red parka), and John Fiske approaching Mt. Clark. The intended route was to ascend the right (south) ridge.

Marcia Lightbody on the trail above Panoramic Cliffs, Liberty Cap and Clouds Rest in the background.



Camp east of Mt. Starr King. Tim Taylor in the red hat. Skies and ski poles were for tent poles. This rugged, heavy tent, accommodating at least 6 people, had been constructed by Phil Scott and others for UCHC winter snow camping and mountaineering trips.



Tim Taylor on  
Merced River Bridge  
above Nevada Falls.



John Fiske (first time on skis) gliding awkwardly and nervously off the tiny bridge slope. The ever-helpful UCHC companions lined the runout, anticipating a wipeout ... didn't happen, to their great disappointments.

John Fiske on lower  
slopes of Mt. Clark,  
Mt. Star King in  
background.



The following six photos came from a trans-Sierra winter, 1959 trip. Four snowshoers (Keith, Roger Hope, Phil Pennington, and Mel Bernstein) went from Yosemite Valley to June Lake), and four skiers (Charlie Raymond, Pete Hall, Bill Gardner, and Paul Delany) went the other way. The two groups met at the Sierra Club Hut, Tuolumne Meadows, Yosemite National Park.



Mel Bernstein (red hat) and Phil Pennington, Lyell Canyon of the Tuolumne.





Phil Pennington, Tuolumne Meadows, Cathedral Peak in background, early 1960.



Mel Bernstein (red), Phil Pennington and Roger Hope, upper Lyell Canyon.  
Mount Lyell (right-center with glacier) and Mount McClure (right).





Roger Hope, Tuolumne Meadows, Unicorn Peak



Paul Delany, Sierra Club Hut, Tuolumne Meadows

Roger Hope, probably on Donohue Pass



The following three photos came from a Mt. Lassen trip, Spring Break, 1960.



Unidentified tobogganers at the Lake Helen snow survey hut at the base of Mt. Lassen. Keith had arranged for UCHC to use the four-man cabin. Some 23 people were packed into the hut, about six on the double bed and most of the rest in the attic. The group included Lois Larusson, Jean Elliott, and Pete Hall.





Mt. Lassen summit, unidentified climbers.



Unidentified climbers descending Mt. Lassen



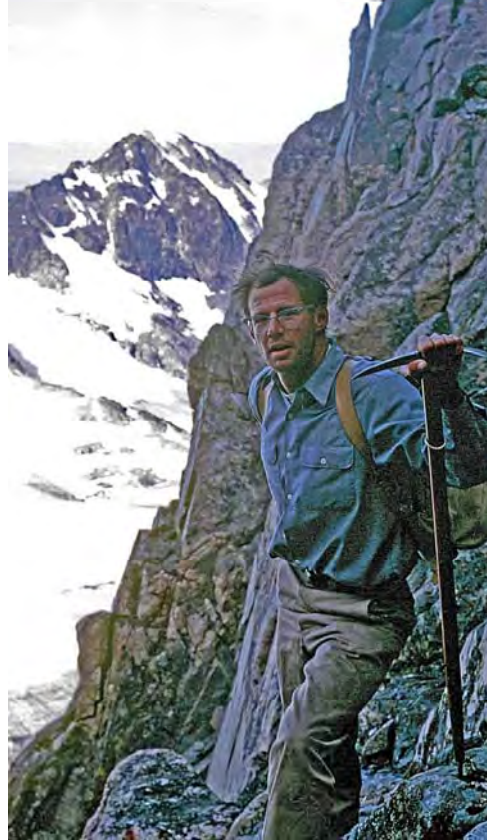
Bill Gardner, Peter Grubb Hut, Winter of 1959/60



Roger Hope, Desolation Valley, 1968



Roger Hope, Gannet Peak, Wind River  
Range, Wyoming, 1969



Pete Hall,  
Tetons, 1964



## Rock Climbing



Unidentified climber (maybe Hi Patton),  
Matthes Crest, Yosemite, 1959.

Phil Scott, Salathe's Sliver, Pinnacles  
National Monument (now National  
Park), 1959.





Keith Howard leading the Flake Pitch Traverse, Lower Cathedral Spire,  
Yosemite Valley, probably Spring Break, 1960.



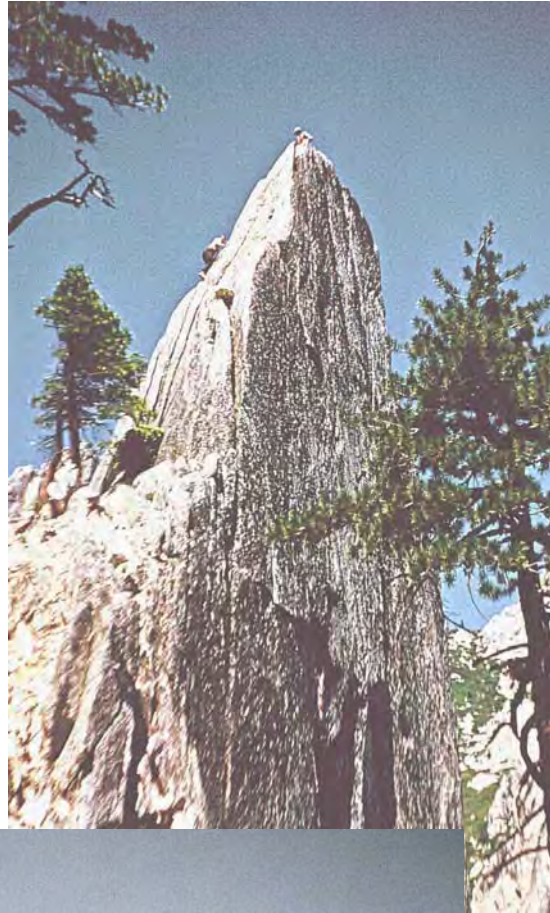




Greg Smith, Lower Cathedral Spire, Spring Break, 1960



Dave Rottman (climbing) and Keith (belaying from top), Castle Crag State Park, 1958 or 1959.



Dave Rottman, Castle Crag State Park, 1958 or 1959.

## **Building Climbing, University of California Berkeley Campus**

This photo of the UC Berkeley Doe Library shows the nighttime climbing route taken by Keith, Pete Hall, Roger Hope, and (probably) Greg Smith. [c.Fall 1959] Once on top of the building, they found a way to enter the building so they would not have to climb down the outside. When they heard a custodian in a hallway, they took off their shoes to avoid shoe noises, and split into two groups to look for a way downstairs, avoiding the custodian, and exiting the Library without being seen. Unfortunately, Keith and Greg were caught by the custodian, who called the Campus Police. The officer refused to believe Keith's story about scaling the outside of the building, until Keith demonstrated how it was done. The officer then questioned whether there were any other climbers involved. Keith claimed that there were no others. The officer had just decided to let Keith and Greg go with a verbal warning, when he opened a door to tell the custodian. Just then Pete and Roger ran up to the door with their shoes off. Nabbed! All four were taken to the Campus Police Station. During the questioning as to whether any of the climbers had been arrested before for this kind of activity, Keith sheepishly admitted the Bay Bridge incident (see next newspaper articles), and gained some celebrity status, as the Campus Police were familiar with the newspaper stories. The four climbers were warned to not do it again, some sort of report was filed, and the four were released.





*Way Out---On the Bridge*

## 3 Intrepid Alpinists Try a Local Peak

"Excelsior!" cried the first University of California alpinist, adjusting his parka against the searing cold of the rarified heights.

"Onward!" cried the second, testing the dangerous footing with his mountain-ering boots.

"And upward!" cried the third, trying to pierce the gloom to the summit still far above.

"Get the heck down off of there," yelled the highway patrolman from the safety of the Bay Bridge deck down below.

### PETTY LAWS

All this was shortly before 2 a.m. yesterday and the three amateur alpinists climbed obediently down from the bridge cable—their ambitions to set new records thwarted by the petty laws of a sober-minded society.

The particular record they were out to set, they explained, was to walk from Yerba Buena island to San Francisco over the tops of the bridge towers, via the ups and downs of the looping cable.

They were spotted soon after starting their first ascent by Highway Patrolman Lynwood Blote, who put a stop to the whole thing.

### NAMES

They gave their names as Arthur K. Howard, 19, and David A. Rottman, 26, both engineering students of 2119 Hearst avenue, Berkeley, and Richard J. Scheible, 25, a chemistry major, of 2252 Parker avenue, Berkeley.

The three, all garbed in parkas and mountain climbing boots, said they tackled the bridge towers because there weren't any suitable Alps left in the Bay Area to conquer.

Patrolman Blote said that the particular law he was citing the three for violating was the one prohibiting pedestrians on the Bay Bridge—horizontal or up and down.



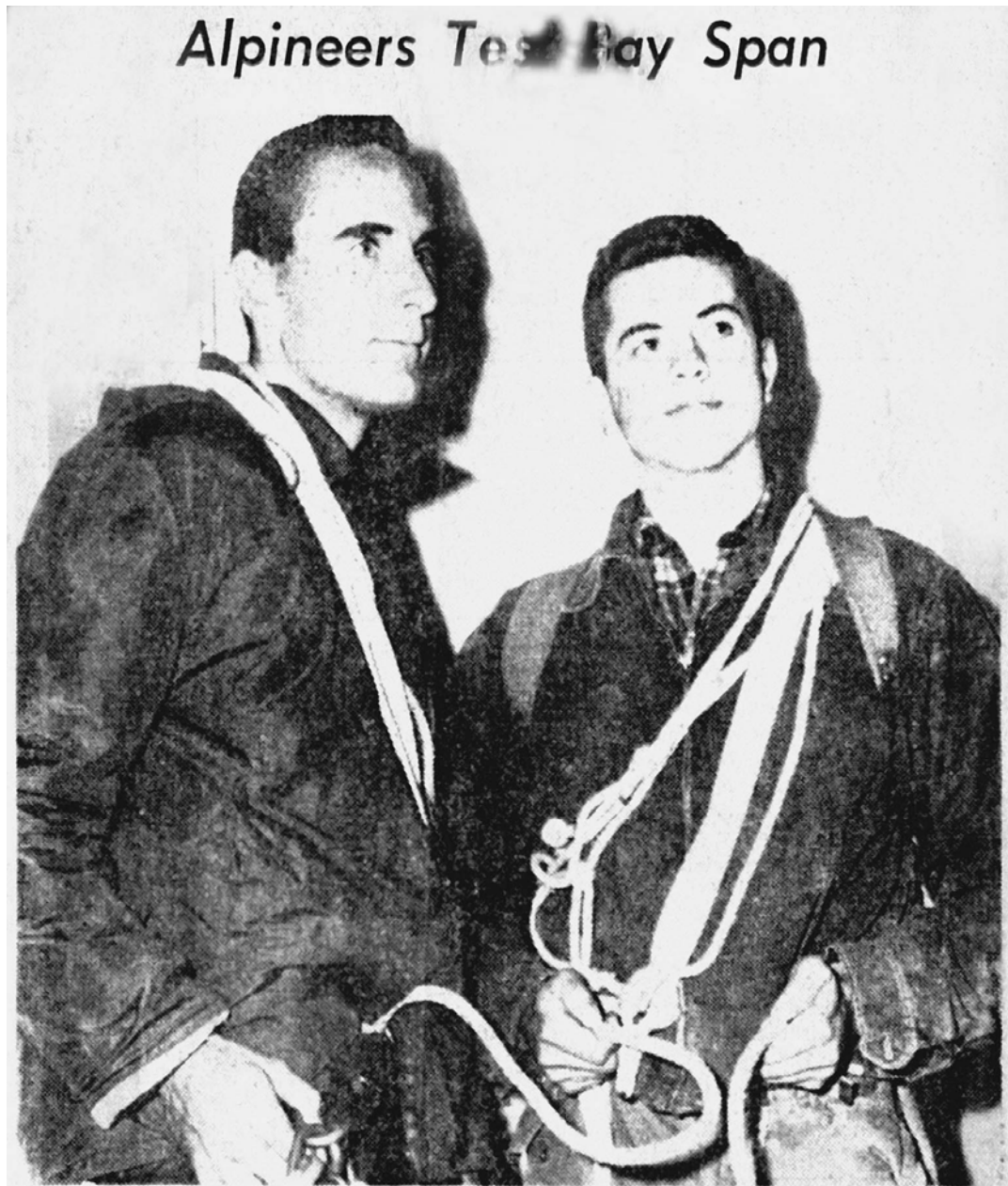
RICHARD J. SCHEIBLE  
K-2 could be next



DAVID A. ROTTMAN, LEFT, ARTHUR K. HOWARD  
Ropes, parkas, pitons, axes, boots . . . and one cop



Different fanciful account, same photographer, unidentified San Francisco newspaper. Headline says *Alpineers Test Bay Span*.



**LOOK, MA, NO MOUNTAIN**—Unable to secure a Nepalese visa for an attempt on Kinchinjunga (28,146 feet) or Dhaulagiri (26,610 feet), Everest being old hat these days, these daunted climbers settled for an early morning

climb of the east tower of Bay Bridge (457.9 feet). But David Rottman (left) and Keith Howard were driven back by bad weather, fell into the hands of the law and were cited for walking. (News Photo by Robert Warren)

## **Backpacking in the Grand Canyon, early 1962\***

\*NB: Date may be 1961. The Kodachrome slides, from which these pictures were created, were date-stamped 1962. However, an article in the April 1961 Bear Track reports on a semester break trip to the GC. If 1961 is correct for this trip, Jean Elliott had not yet become Jean Howard. --KHL April 2014

Al Kaplan



Jean Elliott Howard, Tonto Plateau





Jean Elliott Howard and unidentified companions



Jean Elliott Howard





Mike Haseltine





## Canoeing



Keith, 1959 Russian River. Probably the second day after a shirtless first day and a painful sleepless night because of a terrible sunburn.

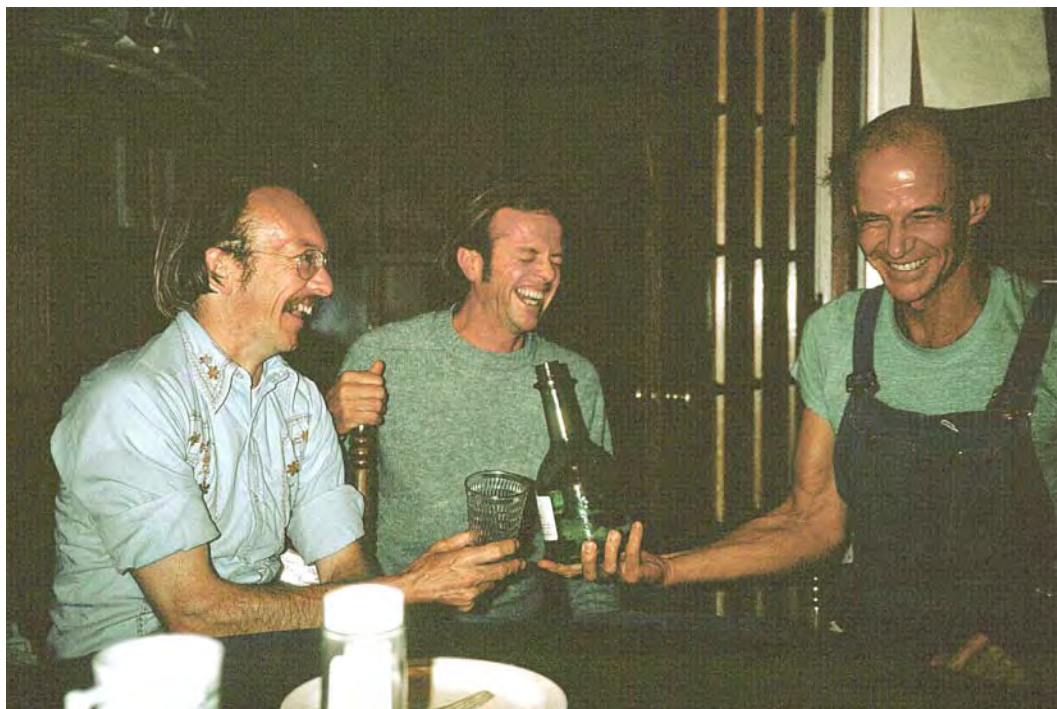
## Miscellaneous

Tom Aley, Canada, 1960





Jean Elliott and Pete Hall's classic pink Ford, Yosemite Valley, Spring Break, 1960.



Pete Hall (left), Keith (middle) and Roger (*Lizard*) Hope, feeling no pain, 1980's, Gurneville, CA.